

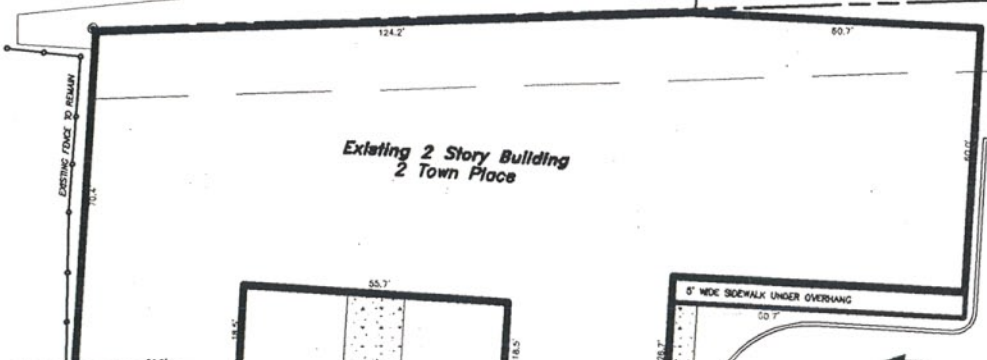
N/L Pennsylvania Railroad Co.



Railroad Lease Line

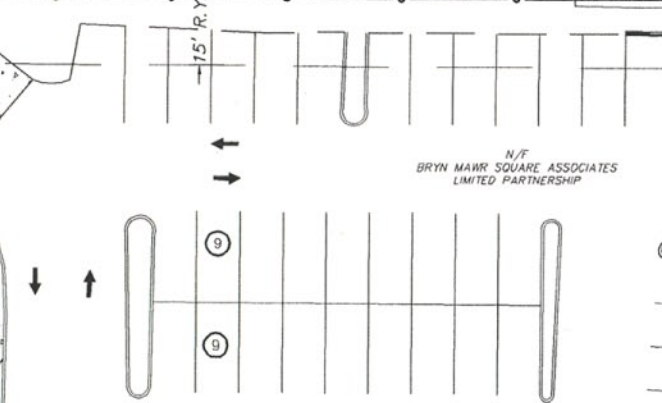
Blgd. Setback Line

N/L Telford Industrial Development Authority
40-00-41176-00-4
DB 4735, PG. 1688



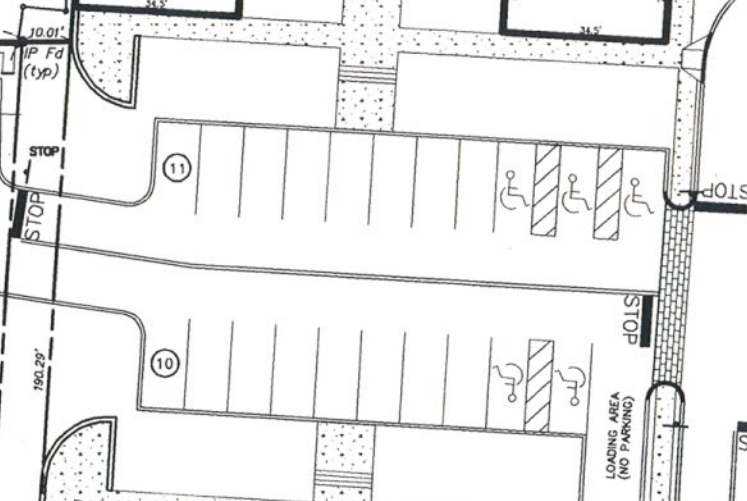
Existing 2 Story Building
2 Town Place

S 52°42'00" E
NEW FENCE 2005
198.29'



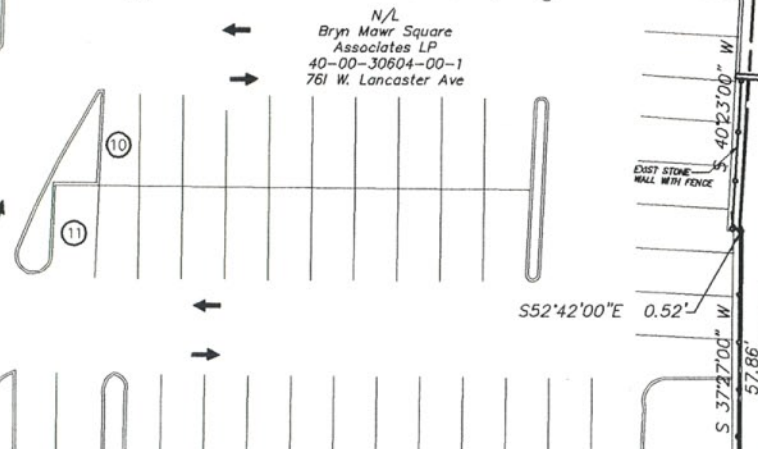
N/F Bryn Mawr Square Associates
LIMITED PARTNERSHIP

N/L Bryn Mawr Square
Associates LP
40-00-30604-00-1
761 W. Lancaster Ave

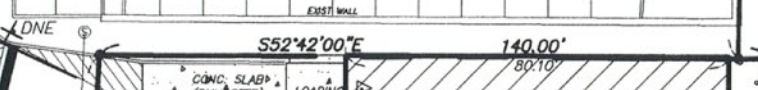


Existing 2 Story Building
1 Town Place

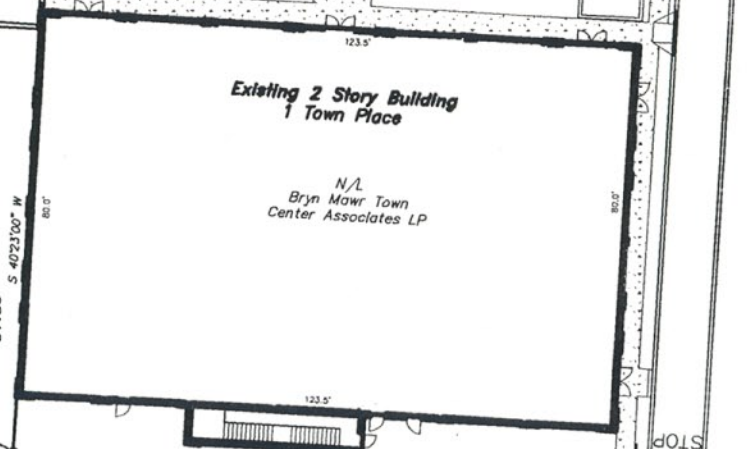
N/L Bryn Mawr Town
Center Associates LP



S 52°42'00" E 0.52'

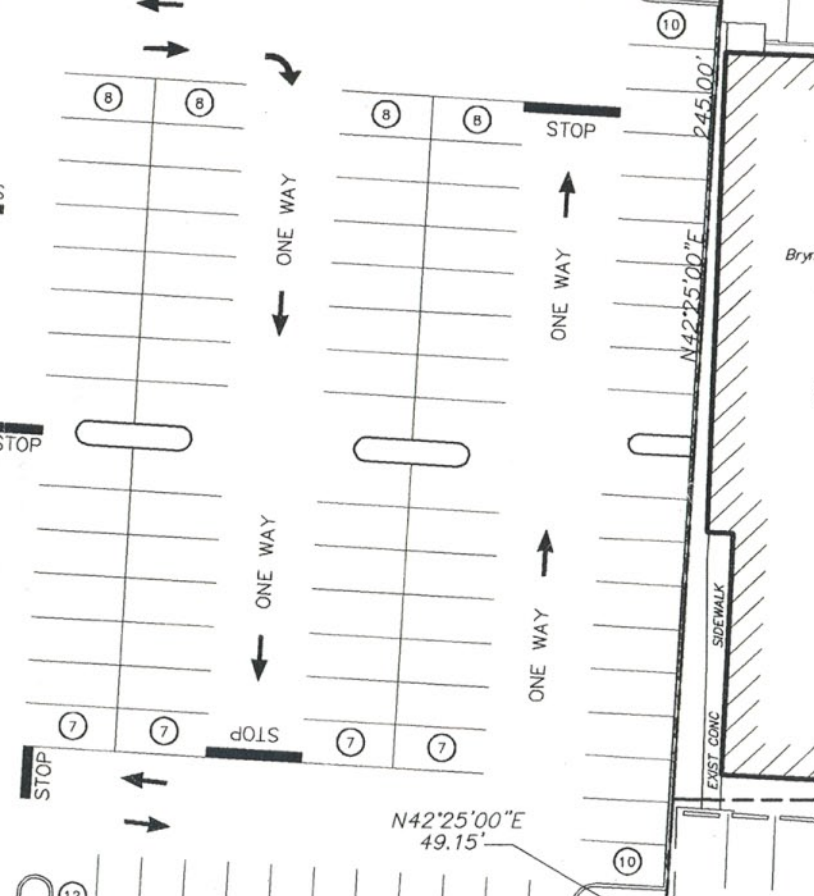


EXISTING BUILDING
(STAPLES)
12900 SQFT



733 LANCASTER AVENUE
N/L 3X2 LIMITED PARTNERSHIP
1814 SPRUCE STREET
PHILADELPHIA, PA

Subject to Easement
See Book M 1696 p 22
See Also M 5209 p 1347



N 42°25'00" E
49.15'

N 48°56'00" E
51.75'

N/L 3X2 Limited Partnership
DB. 4949, PG. 2465