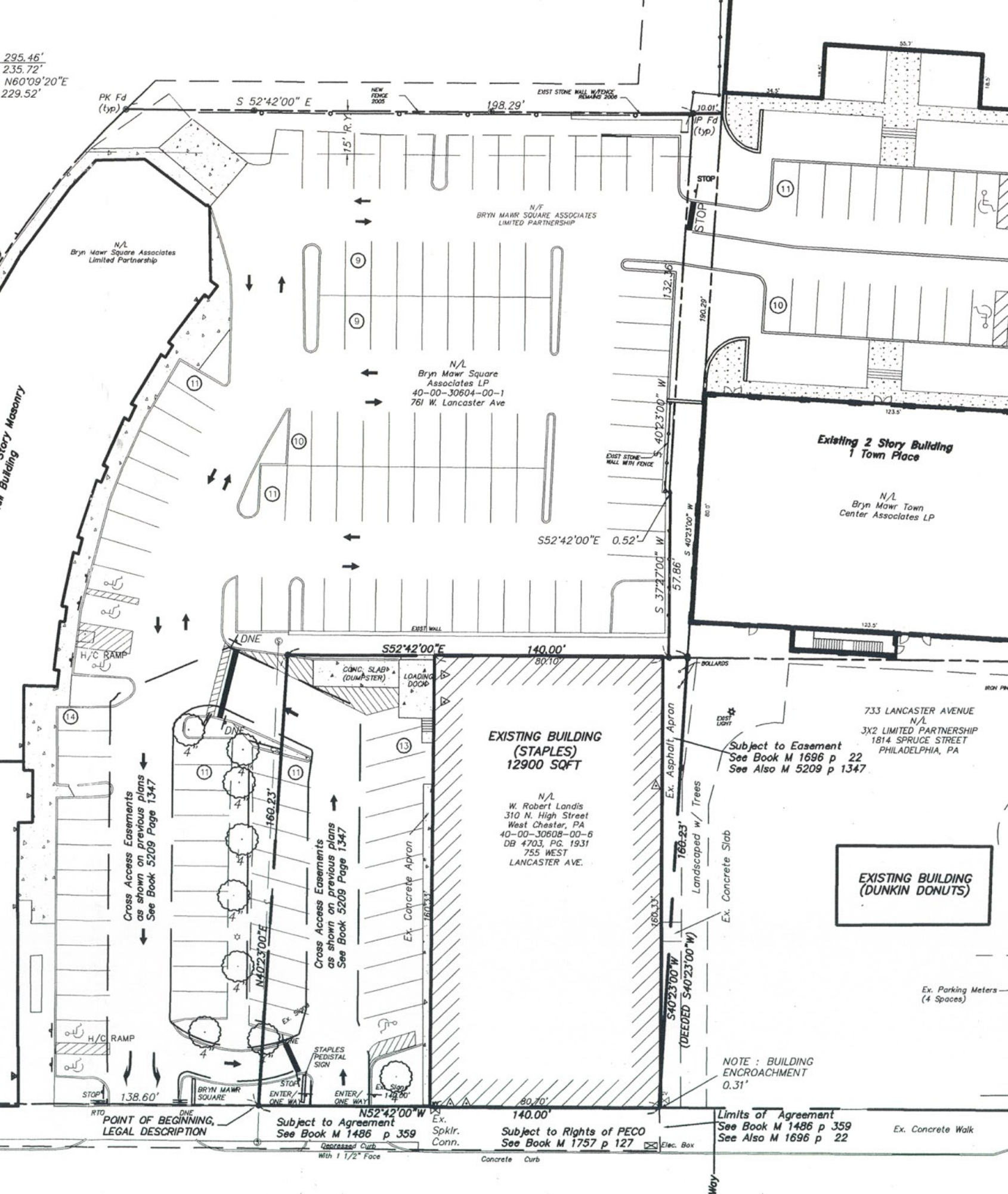


295.46'  
235.72'  
N60°09'20"E  
229.52'



PK Fd (typ)

S 52°42'00" E

198.29'

N/L  
Bryn Mawr Square Associates  
Limited Partnership

N/L  
BRYN MAWR SQUARE ASSOCIATES  
LIMITED PARTNERSHIP

N/L  
Bryn Mawr Square  
Associates LP  
40-00-30604-00-1  
761 W. Lancaster Ave

Existing 2 Story Building  
1 Town Place

N/L  
Bryn Mawr Town  
Center Associates LP

EXISTING BUILDING  
(STAPLES)  
12900 SQFT

N/L  
W. Robert Landis  
310 N. High Street  
West Chester, PA  
40-00-30608-00-6  
DB 4703, PG. 1931  
755 WEST  
LANCASTER AVE.

733 LANCASTER AVENUE  
N/L  
JX2 LIMITED PARTNERSHIP  
1814 SPRUCE STREET  
PHILADELPHIA, PA

EXISTING BUILDING  
(DUNKIN DONUTS)

Subject to Easement  
See Book M 1696 p 22  
See Also M 5209 p 1347

Cross Access Easements  
as shown on previous plans  
See Book 5209 Page 1347

Cross Access Easements  
as shown on previous plans  
See Book 5209 Page 1347

NOTE: BUILDING  
ENCROACHMENT  
0.31'

RTD  
POINT OF BEGINNING,  
LEGAL DESCRIPTION

Subject to Agreement  
See Book M 1486 p 359

Subject to Rights of PECO  
See Book M 1757 p 127

Limits of Agreement  
See Book M 1486 p 359  
See Also M 1696 p 22

Ex. Concrete Walk

Depressed Curb  
With 1 1/2" Face

Concrete Curb

Elec. Box

Ex. Parking Meters  
(4 Spaces)

Way