



Demographic and Income Profile

Prepared by

763 W Lancaster Ave
Bryn Mawr, PA 19010

Site Type: Radius

Latitude: 40.020211
Longitude: -75.315688
Radius: 1.0 mile

Summary	2000	2007	2012
Population	13,362	12,460	12,484
Households	4,782	4,788	4,816
Families	2,425	2,313	2,241
Average Household Size	2.23	2.22	2.21
Owner Occupied HUs	2,539	2,559	2,559
Renter Occupied HUs	2,243	2,230	2,256
Median Age	30.0	32.8	34.2

Trends: 2007-2012 Annual Rate	Area	State	National
Population	0.04%	0.42%	1.30%
Households	0.12%	0.51%	1.33%
Families	-0.63%	0.08%	1.08%
Owner HHs	0%	0.5%	1.41%
Median Household Income	3.56%	3.37%	3.32%

Households by Income	2000		2007		2012	
	Number	Percent	Number	Percent	Number	Percent
< \$15,000	668	13.9%	511	10.7%	438	9.1%
\$15,000 - \$24,999	362	7.5%	280	5.9%	232	4.8%
\$25,000 - \$34,999	477	9.9%	285	6.0%	240	5.0%
\$35,000 - \$49,999	476	9.9%	527	11.0%	424	8.8%
\$50,000 - \$74,999	895	18.6%	708	14.8%	601	12.5%
\$75,000 - \$99,999	509	10.6%	647	13.5%	636	13.2%
\$100,000 - \$149,999	579	12.0%	678	14.2%	805	16.7%
\$150,000 - \$199,000	276	5.7%	331	6.9%	409	8.5%
\$200,000+	569	11.8%	819	17.1%	1,032	21.4%
Median Household Income	\$59,040		\$77,438		\$92,257	
Average Household Income	\$100,872		\$136,448		\$171,395	
Per Capita Income	\$37,316		\$53,443		\$67,134	

Population by Age	2000		2007		2012	
	Number	Percent	Number	Percent	Number	Percent
0 - 4	471	3.5%	442	3.5%	464	3.7%
5 - 9	525	3.9%	413	3.3%	404	3.2%
10 - 14	560	4.2%	480	3.9%	430	3.4%
15 - 19	1,552	11.6%	1,075	8.6%	1,016	8.1%
20 - 24	2,627	19.7%	1,778	14.3%	1,818	14.6%
25 - 34	1,715	12.8%	2,427	19.5%	2,322	18.6%
35 - 44	1,517	11.4%	1,510	12.1%	1,531	12.3%
45 - 54	1,404	10.5%	1,360	10.9%	1,426	11.4%
55 - 64	1,003	7.5%	1,162	9.3%	1,212	9.7%
65 - 74	901	6.7%	695	5.6%	740	5.9%
75 - 84	733	5.5%	692	5.6%	645	5.2%
85+	356	2.7%	427	3.4%	473	3.8%

Race and Ethnicity	2000		2007		2012	
	Number	Percent	Number	Percent	Number	Percent
White Alone	11,046	82.7%	9,213	73.9%	8,713	69.8%
Black Alone	1,132	8.5%	1,906	15.3%	2,152	17.2%
American Indian Alone	9	0.1%	7	0.1%	7	0.1%
Asian Alone	858	6.4%	1,039	8.3%	1,291	10.3%
Pacific Islander Alone	13	0.1%	11	0.1%	12	0.1%
Some Other Race Alone	97	0.7%	78	0.6%	90	0.7%
Two or More Races	207	1.5%	206	1.7%	221	1.8%
Hispanic Origin (Any Race)	302	2.3%	313	2.5%	353	2.8%

Data Note: Income is expressed in current dollars.

Source: U.S. Bureau of the Census, 2000 Census of Population and Housing. ESRI forecasts for 2007 and 2012.



Demographic and Income Profile

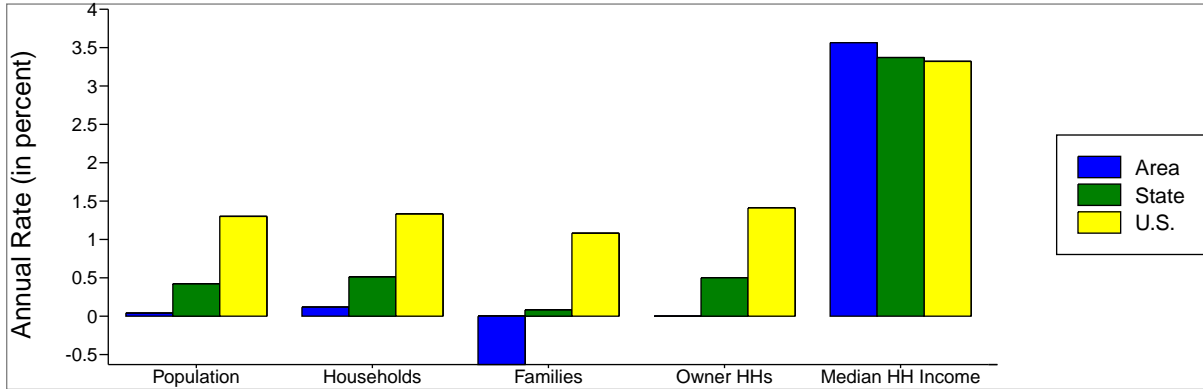
Prepared by

763 W Lancaster Ave
Bryn Mawr, PA 19010

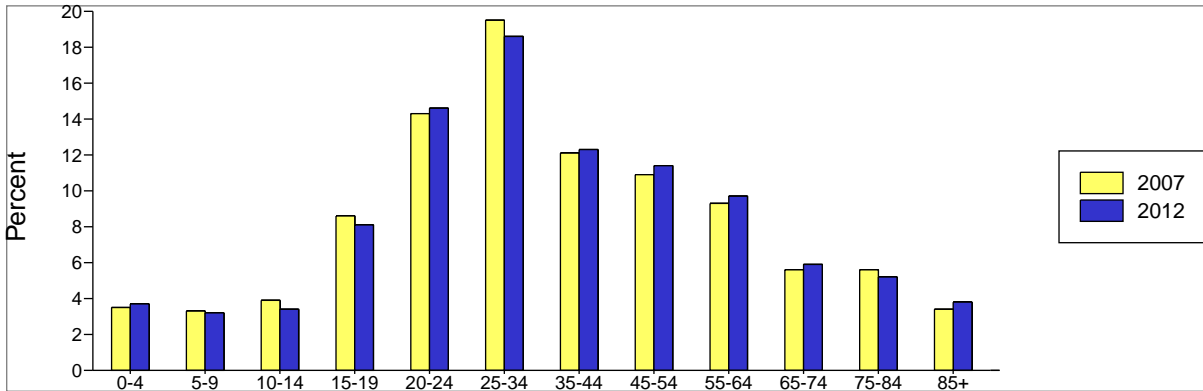
Site Type: Radius

Latitude: 40.020211
Longitude: -75.315688
Radius: 1.0 mile

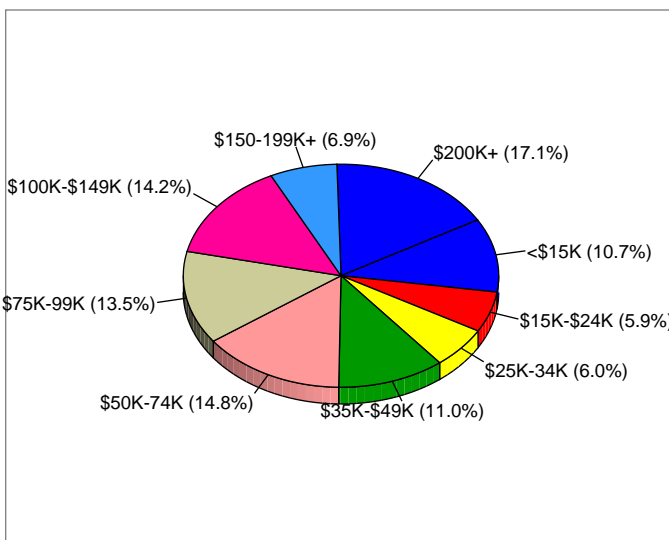
Trends 2007-2012



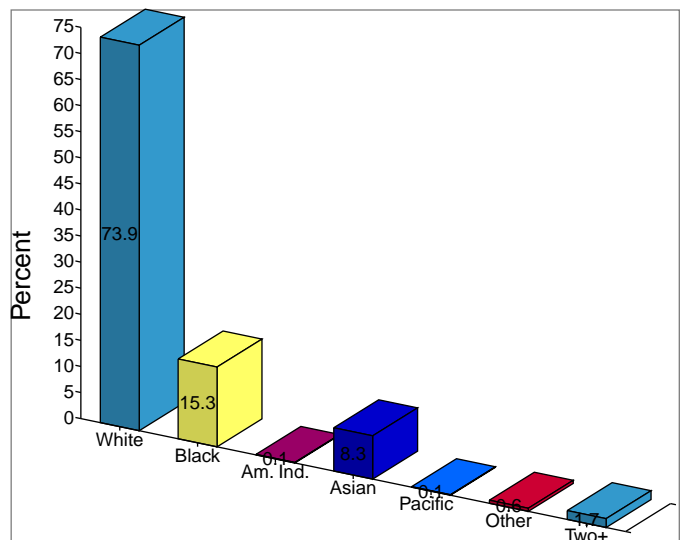
Population by Age



2007 Household Income



2007 Population by Race



2007 Percent Hispanic Origin: 2.5%



Demographic and Income Profile

Prepared by

763 W Lancaster Ave
Bryn Mawr, PA 19010

Site Type: Radius

Latitude: 40.020211
Longitude: -75.315688
Radius: 3.0 mile

Summary	2000	2007	2012
Population	81,809	82,592	83,129
Households	30,007	30,326	30,652
Families	19,367	18,901	18,597
Average Household Size	2.45	2.44	2.43
Owner Occupied HUs	21,751	22,051	22,190
Renter Occupied HUs	8,256	8,275	8,461
Median Age	37.7	38.7	40.1

Trends: 2007-2012 Annual Rate	Area	State	National
Population	0.13%	0.42%	1.30%
Households	0.21%	0.51%	1.33%
Families	-0.32%	0.08%	1.08%
Owner HHs	0.13%	0.5%	1.41%
Median Household Income	3.75%	3.37%	3.32%

Households by Income	2000		2007		2012	
	Number	Percent	Number	Percent	Number	Percent
< \$15,000	2,633	8.8%	1,792	5.9%	1,484	4.8%
\$15,000 - \$24,999	1,987	6.6%	1,515	5.0%	1,207	3.9%
\$25,000 - \$34,999	2,279	7.6%	1,558	5.1%	1,243	4.1%
\$35,000 - \$49,999	3,223	10.8%	2,889	9.5%	2,252	7.3%
\$50,000 - \$74,999	5,028	16.8%	4,128	13.6%	3,809	12.4%
\$75,000 - \$99,999	3,886	13.0%	4,016	13.2%	3,399	11.1%
\$100,000 - \$149,999	4,299	14.4%	5,464	18.0%	5,957	19.4%
\$150,000 - \$199,000	2,300	7.7%	2,560	8.4%	3,204	10.5%
\$200,000+	4,291	14.3%	6,403	21.1%	8,096	26.4%
Median Household Income	\$73,835		\$94,342		\$113,417	
Average Household Income	\$118,409		\$147,242		\$181,350	
Per Capita Income	\$44,012		\$55,391		\$68,326	

Population by Age	2000		2007		2012	
	Number	Percent	Number	Percent	Number	Percent
0 - 4	4,286	5.2%	3,978	4.8%	4,144	5.0%
5 - 9	4,749	5.8%	4,680	5.7%	3,880	4.7%
10 - 14	5,285	6.5%	4,950	6.0%	4,978	6.0%
15 - 19	7,793	9.5%	8,430	10.2%	7,821	9.4%
20 - 24	7,130	8.7%	6,994	8.5%	7,825	9.4%
25 - 34	8,746	10.7%	8,582	10.4%	8,478	10.2%
35 - 44	11,192	13.7%	10,229	12.4%	9,634	11.6%
45 - 54	11,434	14.0%	11,718	14.2%	11,471	13.8%
55 - 64	7,376	9.0%	9,175	11.1%	10,692	12.9%
65 - 74	6,129	7.5%	5,197	6.3%	5,573	6.7%
75 - 84	5,245	6.4%	5,439	6.6%	4,870	5.9%
85+	2,444	3.0%	3,220	3.9%	3,763	4.5%

Race and Ethnicity	2000		2007		2012	
	Number	Percent	Number	Percent	Number	Percent
White Alone	73,627	90.0%	70,763	85.7%	68,939	82.9%
Black Alone	3,490	4.3%	5,527	6.7%	6,380	7.7%
American Indian Alone	79	0.1%	93	0.1%	102	0.1%
Asian Alone	3,245	4.0%	4,591	5.6%	5,895	7.1%
Pacific Islander Alone	42	0.1%	49	0.1%	54	0.1%
Some Other Race Alone	395	0.5%	498	0.6%	581	0.7%
Two or More Races	930	1.1%	1,071	1.3%	1,179	1.4%
Hispanic Origin (Any Race)	1,292	1.6%	1,677	2.0%	1,942	2.3%

Data Note: Income is expressed in current dollars.

Source: U.S. Bureau of the Census, 2000 Census of Population and Housing. ESRI forecasts for 2007 and 2012.



Demographic and Income Profile

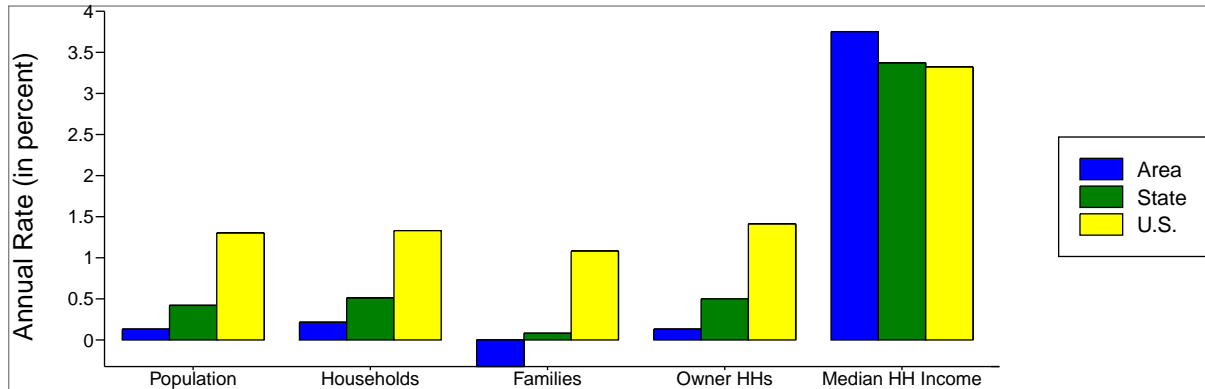
Prepared by

763 W Lancaster Ave
Bryn Mawr, PA 19010

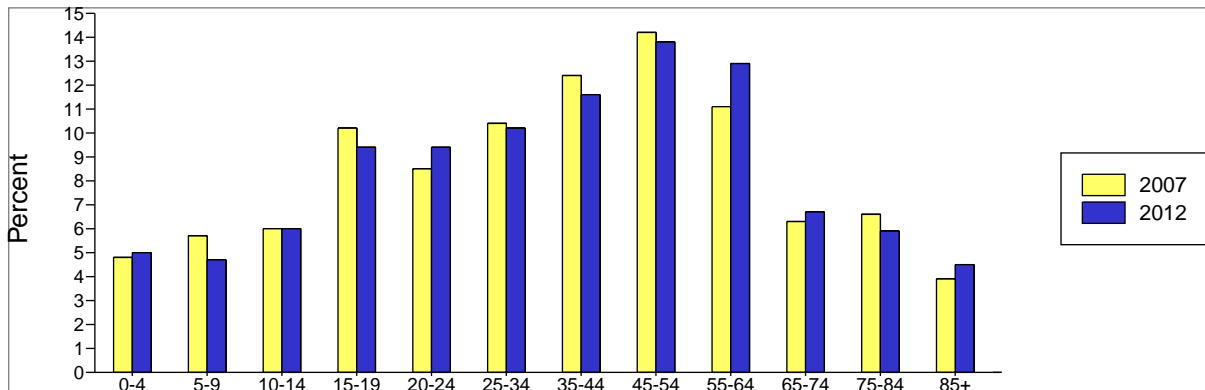
Site Type: Radius

Latitude: 40.020211
Longitude: -75.315688
Radius: 3.0 mile

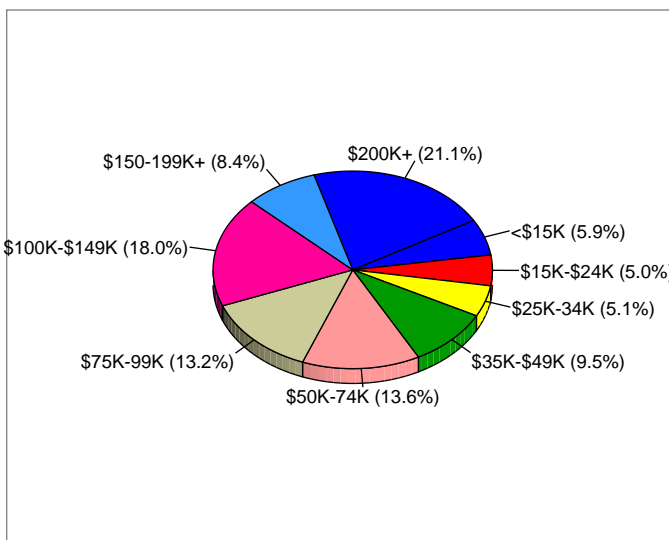
Trends 2007-2012



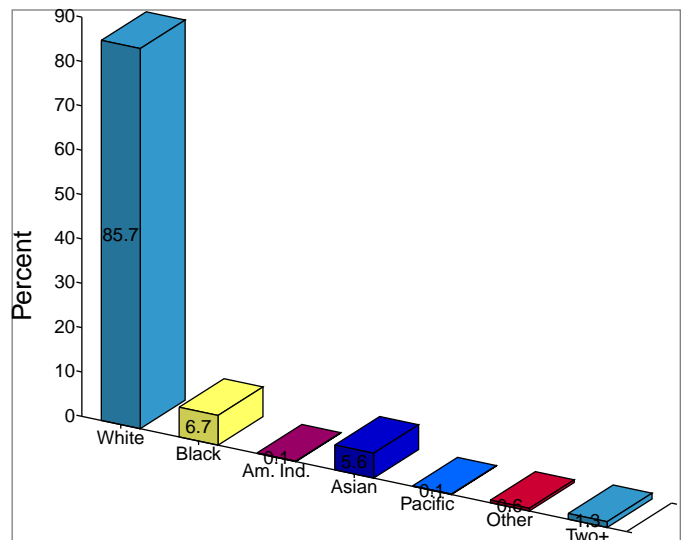
Population by Age



2007 Household Income



2007 Population by Race



2007 Percent Hispanic Origin: 2.0%



Demographic and Income Profile

Prepared by

763 W Lancaster Ave
Bryn Mawr, PA 19010

Site Type: Radius

Latitude: 40.020211
Longitude: -75.315688
Radius: 5.0 mile

Summary	2000	2007	2012
Population	276,881	279,061	281,195
Households	105,228	106,438	107,662
Families	68,951	67,360	66,276
Average Household Size	2.49	2.47	2.47
Owner Occupied HUs	77,422	78,544	78,896
Renter Occupied HUs	27,806	27,894	28,766
Median Age	37.9	39.3	40.6

Trends: 2007-2012 Annual Rate	Area	State	National
Population	0.15%	0.42%	1.30%
Households	0.23%	0.51%	1.33%
Families	-0.32%	0.08%	1.08%
Owner HHs	0.09%	0.5%	1.41%
Median Household Income	3.48%	3.37%	3.32%

Households by Income	2000		2007		2012	
	Number	Percent	Number	Percent	Number	Percent
< \$15,000	10,976	10.4%	7,694	7.2%	6,477	6.0%
\$15,000 - \$24,999	8,774	8.3%	6,541	6.1%	5,142	4.8%
\$25,000 - \$34,999	10,629	10.1%	6,912	6.5%	5,578	5.2%
\$35,000 - \$49,999	13,958	13.3%	12,983	12.2%	9,915	9.2%
\$50,000 - \$74,999	20,207	19.2%	17,200	16.2%	16,617	15.4%
\$75,000 - \$99,999	13,406	12.7%	15,840	14.9%	13,958	13.0%
\$100,000 - \$149,999	13,122	12.5%	17,933	16.8%	21,218	19.7%
\$150,000 - \$199,000	5,423	5.2%	7,705	7.2%	9,997	9.3%
\$200,000+	8,700	8.3%	13,631	12.8%	18,760	17.4%
Median Household Income	\$59,394		\$77,255		\$91,685	
Average Household Income	\$88,601		\$114,361		\$140,716	
Per Capita Income	\$34,101		\$44,319		\$54,659	

Population by Age	2000		2007		2012	
	Number	Percent	Number	Percent	Number	Percent
0 - 4	15,728	5.7%	15,074	5.4%	15,458	5.5%
5 - 9	17,394	6.3%	16,457	5.9%	14,523	5.2%
10 - 14	18,566	6.7%	17,634	6.3%	17,178	6.1%
15 - 19	21,405	7.7%	23,893	8.6%	22,258	7.9%
20 - 24	19,271	7.0%	19,755	7.1%	22,845	8.1%
25 - 34	34,558	12.5%	30,983	11.1%	29,871	10.6%
35 - 44	41,366	14.9%	37,970	13.6%	35,690	12.7%
45 - 54	38,309	13.8%	41,352	14.8%	41,442	14.7%
55 - 64	24,918	9.0%	30,710	11.0%	36,323	12.9%
65 - 74	21,629	7.8%	18,249	6.5%	19,303	6.9%
75 - 84	17,145	6.2%	17,885	6.4%	15,764	5.6%
85+	6,591	2.4%	9,101	3.3%	10,539	3.7%

Race and Ethnicity	2000		2007		2012	
	Number	Percent	Number	Percent	Number	Percent
White Alone	227,972	82.3%	219,500	78.7%	213,602	76.0%
Black Alone	34,289	12.4%	39,933	14.3%	43,382	15.4%
American Indian Alone	331	0.1%	376	0.1%	405	0.1%
Asian Alone	9,813	3.5%	14,114	5.1%	18,120	6.4%
Pacific Islander Alone	73	0.0%	89	0.0%	103	0.0%
Some Other Race Alone	1,151	0.4%	1,424	0.5%	1,661	0.6%
Two or More Races	3,253	1.2%	3,626	1.3%	3,923	1.4%
Hispanic Origin (Any Race)	3,895	1.4%	4,896	1.8%	5,670	2.0%

Data Note: Income is expressed in current dollars.

Source: U.S. Bureau of the Census, 2000 Census of Population and Housing. ESRI forecasts for 2007 and 2012.



Demographic and Income Profile

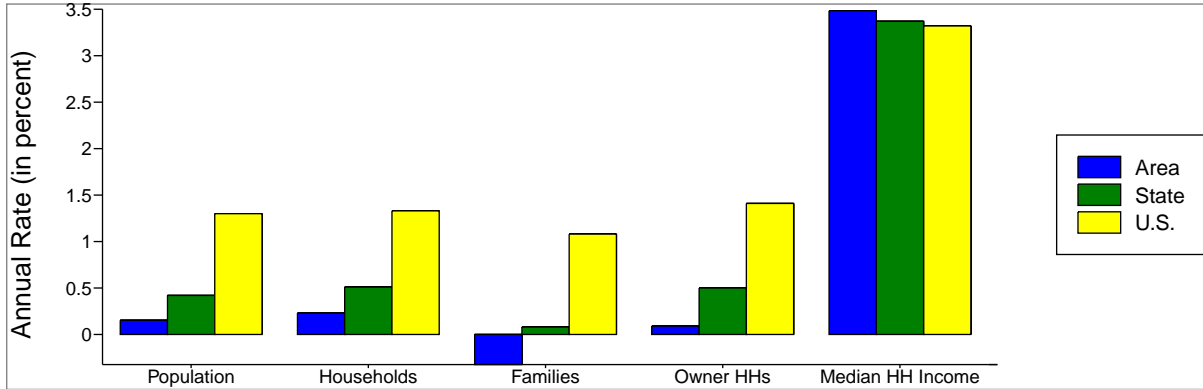
Prepared by

763 W Lancaster Ave
Bryn Mawr, PA 19010

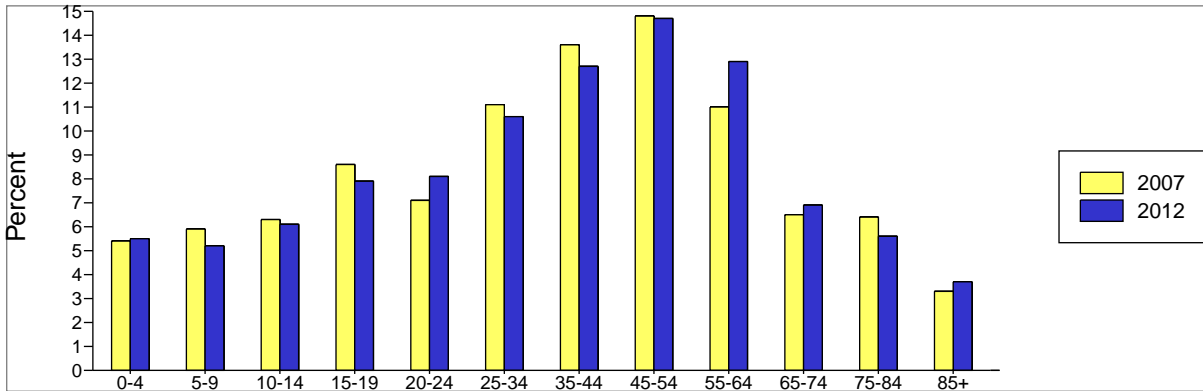
Site Type: Radius

Latitude: 40.020211
Longitude: -75.315688
Radius: 5.0 mile

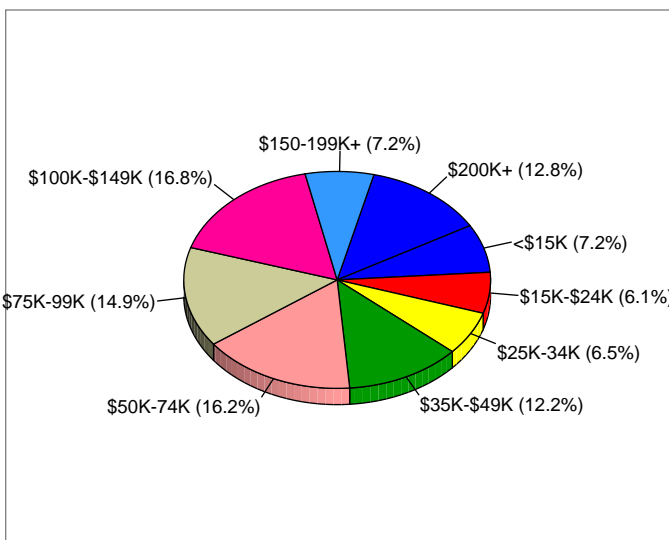
Trends 2007-2012



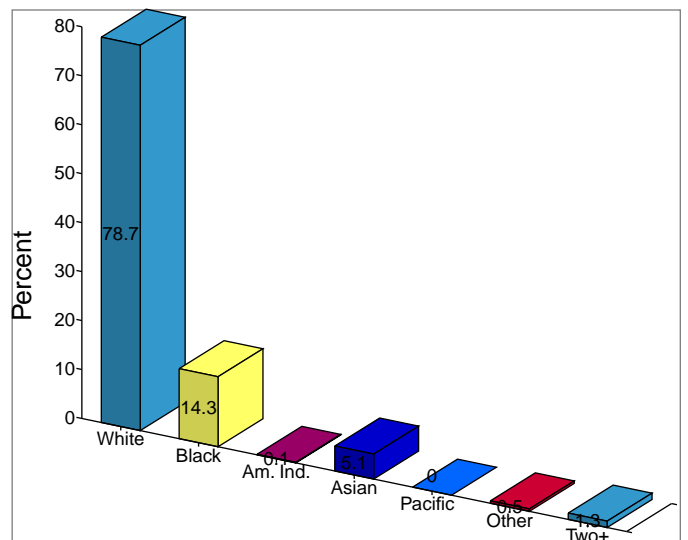
Population by Age



2007 Household Income



2007 Population by Race



2007 Percent Hispanic Origin: 1.8%